

SMD Monolithic Crystal Filters

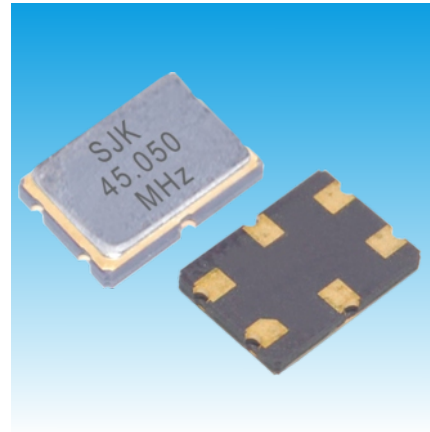


Size: 7.0×5.0×1.3 mm

CF Series 2Pole SMD Crystal Filter

Features

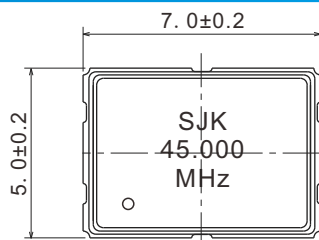
- Typical 7.0×5.0×1.3mm SMD crystal filter
- 2 pole function in a single package
- Excellent guaranteed attenuation
- Excellent shock and vibration resistance
- Automatic mounting and reflow soldering
- Applications: Wireless communications, Cellular, Radio communications, etc.
- RoHS Compliant /Pb Free



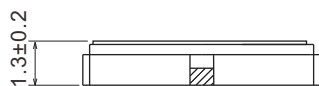
Standard Specification

Item /Type	CF (SMD 7050 Crystal Filter)			
Nominal Frequency	21.400MHz	21.700MHz	45.000MHz	45.000MHz
Pole	2	2	2	2
Overtone Order	Fundamental	Fundamental	Fundamental	Fundamental
Pass Bandwidth	±15KHz min./3dB	±7.5KHz min./3dB	±7.5KHz min./3dB	±15KHz min./3dB
Stop Bandwidth	±50KHz min./15dB	±28KHz min./18dB	±25KHz min./18dB	±60KHz min./15dB
Ripple	1.5dB max.	0.5dB max.	1.0dB max.	1.0dB max.
Insertion Loss	2.0dB max.	1.5dB max.	2.0dB max.	2.0dB max.
Guaranteed Attenuation	70dB min.	70dB min.	70dB min.	70dB min.
Terminating Impedance	1500Ω//2.5pF	1500Ω//2.5pF	560Ω//6.0pF	1200Ω//1.8pF
Operating Temperature	-20~+70°C			
Packing Unit	1000pcs./reel			

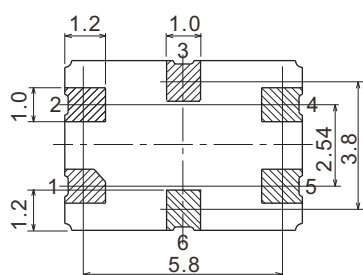
Dimensions [mm]



Top View

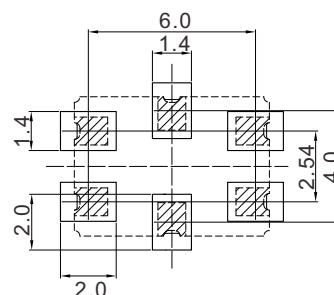


Side View

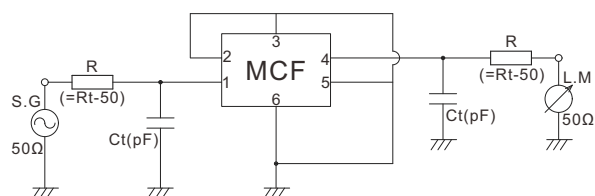


Bottom View

Pin	Connetction
1	Input
2	GND
3	GND
4	Output
5	GND
6	GND



Recommended Land Pattern



Measurement Circuit