

## LT SERIES CERAMIC FILTERS

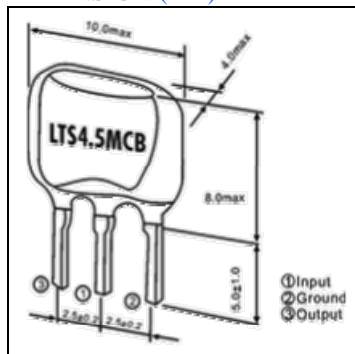
### LT SERIES FOR TV/VCR STAGE, 4.5~6.5MHz TECHNICAL CHARACTERISTICS

Part Number	3db Band Width (KHz) 3db	20db Band Width (KHz) 20db	Insertion Loss (db)	Spurious Affenuation (9-12MHz) (db) min	Input-Output Impedance
LT4.5MB	$\geq \pm 60 (\pm 105)$	$\leq 530 (420)$	$\leq 6 (4)$	$\geq 20 (4.5\text{MHz})$	1000
LT5.5MB	$\geq \pm (\pm 120)$	$\leq 550 (470)$	$\leq 6 (3)$	$\geq 25 (5.5 \pm 1.0\text{MHz})$	600
LT6.0MB	$\geq \pm (\pm 130)$	$\leq 600 (500)$	$\leq 6 (2.5)$	$\geq 25 (6.0 \pm 1.0\text{MHz})$	470
LT6.5MB	$\geq \pm (\pm 130)$	$\leq 630 (530)$	$\leq 6 (2.5)$	$\geq 25 (6.5 \pm 1.0\text{MHz})$	470

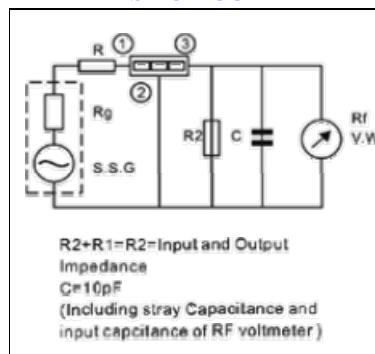
### LTS Series for TV/VCR Stage TECHNICAL CHARACTERISTICS

Part Number	3db Band Width (KHz) 3db	20db Band Width (KHz) 20db	Insertion Loss (db)	Spurious Affenuation (9-12MHz) (db) min	Input-Output Impedance
LT4.5MCB	$\pm 60 (\pm 110)$	600 (470)	6 (3.2)	30 (0~4.5MHz)	1000
LTS5.5MSB	$\pm 60 (\pm 115)$	600 (500)	6 (3.6)	30 (0~5.5MHz)	600
LTS6.5MSB	$\pm 60 (\pm 115)$	600 (500)	6 (4.0)	30 (0~6.0MHz)	470
LTS5.5MSB	$\pm 75 (\pm 115)$	630 (530)	6 (3.6)	30 (0~6.5MHz)	470
LTSH4.5MDB	$\geq \pm 70$	$\leq 750$	$\leq 6$	$\geq 30$	
LTSH5.5MDB	$\geq \pm 80$	$\leq 750$	$\leq 6$	$\geq 30$	
LTSH6.0MDB	$\geq \pm 80$	$\leq 750$	$\leq 6$	$\geq 30$	
LTSH6.5MDB	$\geq \pm 80$	$\leq 800$	$\leq 6$	$\geq 30$	

#### DIMENSION (mm)



#### TEST CIRCUIT



#### CHARACTERISTICS

