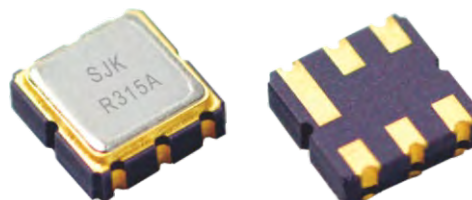


Features

- Smallest size 3.0×3.0×1.25mm, surface mounting package.
- 1-port resonator.
- Package code DCC6C.
- Electrostatic Sensitive Devices (ESD).
- Other frequency available.
- Automatic mounting, solder reflow capable.
- Applications for automotive electronics, Remote control, and more .
- RoHS Compliant / Pb-Free.

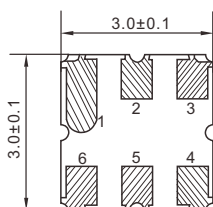


Electrical Specifications

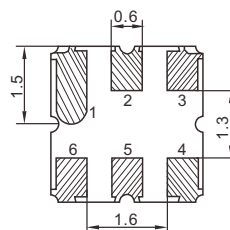
Item			Minimum	Type	Maximum	Unit
Center Frequency	Absolute Frequency	F_C	280	315	915	MHz
	Tolerance form 315MHz	ΔF_C		± 75		KHz
Insertion Loss (Min.)		IL		1.4	1.9	dB
Quality Factor	Unloaded Q	Q_U		15000		
	50Ω loaded Q	Q_L		2221		
Temperature Stability	Turnover temperature	T_0	25	40	55	°C
	Turnover frequency	F_0		F_C		
	Frequency temperature coefficient	FTC		0.032		ppm/°C
Frequency Aging	Absolute value during the first year	$ F_A $		≤ 10		ppm/yr
DC Insulation Resistance between Any Two Pins			1.0			MΩ
RF Equivalent RLC Model	Motional Resistance	R_M		16.6	23.5	Ω
	Motional Inductance	L_M		129.00		μH
	Motional Capacitance	C_M		1.95		fF
	Static Capacitance	C_0	2.80	3.00	3.20	pF
Operating Temperature Range		T	-40		+85	°C
Storage Temperature Range		T_{stg}	-55		+125	°C
DC Voltage		V_{DC}		10		V

Dimensions

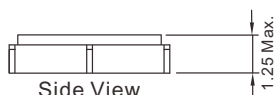
Units:mm



Top View



Bottom View

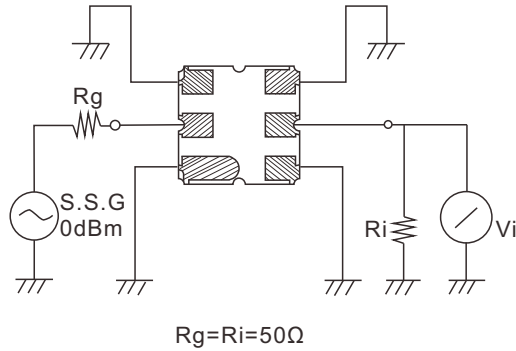


Side View

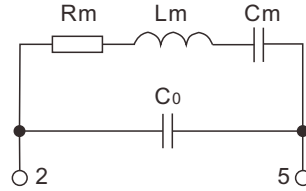
Pin Connection

Name	Connection
Pin 1	GND
Pin 2	INPUT
Pin 3	GND
Pin 4	GND
Pin 5	OUTPUT
Pin 6T	GND

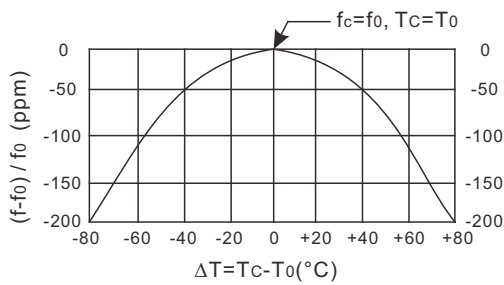
Test Circuit



Equivalent LC Model



Temperature Characteristics



The curve shown above accounts for resonator contribution only and does not include LC component temperature contributions.

Recommended Reflow Soldering Diagram

