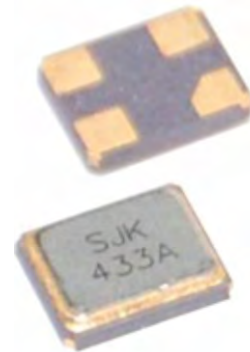


Features

- Ultra smallest size 3.2×2.5×0.68mm, surface mounting package.
- 1-port resonator.
- Very low cost than other SMD package.
- Electrostatic Sensitive Devices (ESD).
- Other frequency available.
- Automatic mounting, solder reflow capable.
- Applications for automotive electronics, Remote control, and more.
- RoHS Compliant / Pb-Free.

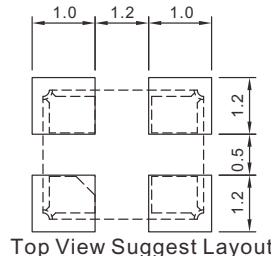
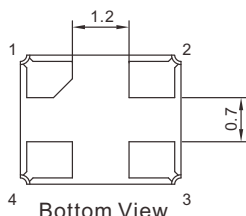
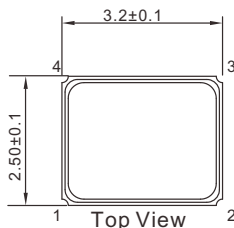


Electrical Specifications

Item		Minimum	Type	Maximum	Unit	
Center Frequency	Absolute Frequency	F_C	315,433.92		MHz	
	Tolerance form 433.92MHz	ΔF_C	± 75		KHz	
Insertion Loss (Min.)		IL	1.5	2.0	dB	
Quality Factor	Unloaded Q	Q_U	18362			
	50Ω loaded Q	Q_L	2150			
Temperature Stability	Turnover temperature	T_0	20	40	55	°C
	Turnover frequency	F_0	F_C			
	Frequency temperature coefficient	FTC	0.032		ppm/°C	
Frequency Aging	Absolute value during the first year	$ F_A $	≤ 10		ppm/yr	
DC Insulation Resistance between Any Two Pins			1.0		MΩ	
RF Equivalent RLC Model	Motional Resistance	R_M	13.2	18.0	Ω	
	Motional Inductance	L_M	89.4	110.2	μH	
	Motional Capacitance	C_M	1.5		fF	
	Static Capacitance	C_0	1.45	1.75	2.05	pF
Operating Temperature Range		T	-40	+85	°C	
Storage Temperature Range		T_{stg}	-55	+125	°C	
DC Voltage		V_{DC}	10		V	

Dimensions

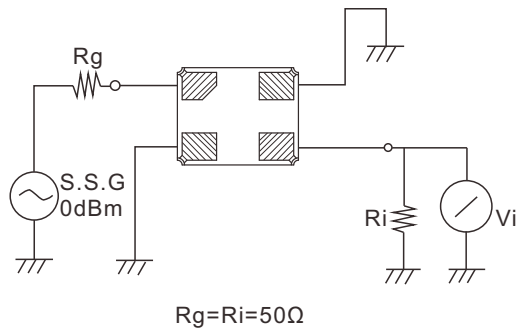
Units:mm



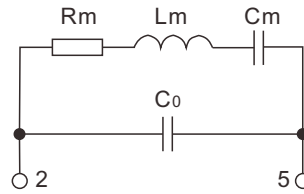
Pin Connection

Name	Connection
Pin 1	Input
Pin 2	GND
Pin 3	Output
Pin 4	GND

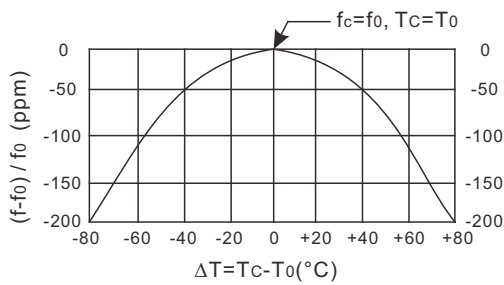
Test Circuit



Equivalent LC Model



Temperature Characteristics



The curve shown above accounts for resonator contribution only and does not include LC component temperature contributions.

Recommended Reflow Soldering Diagram

