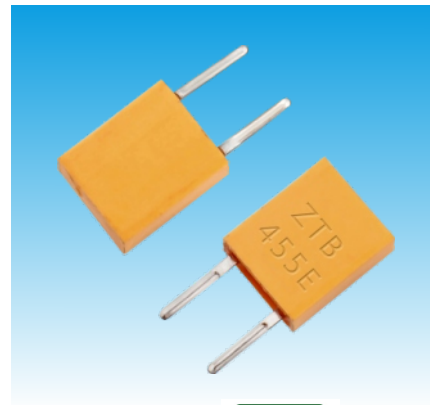


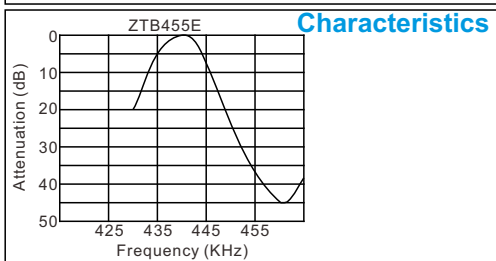
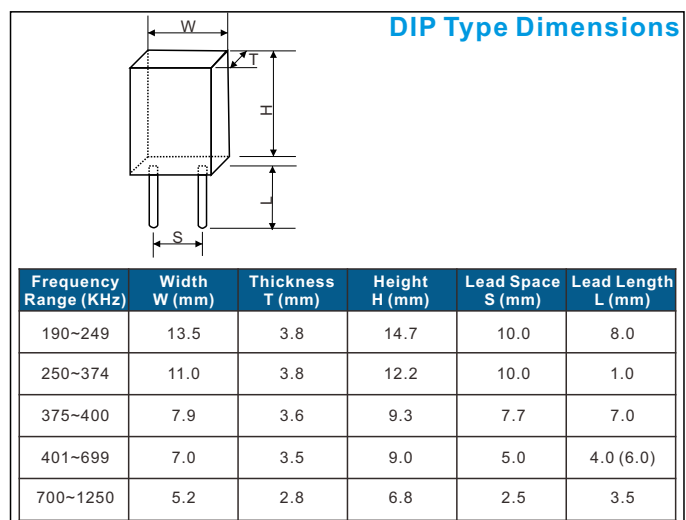
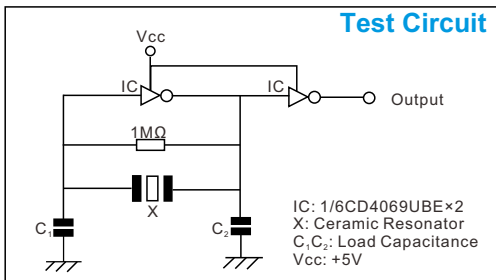
### Features

- Highly reliable design with excellent environmental resistance
- Standardized for use in low profile devices
- Low cost
- Applications: *Security, Consumer device, TV, Radio, Receiver, etc.*



### Standard Specifications

Part Number		Frequency Accuracy (at 25°C)	Resonator Impedance	Frequency Stability	Aging for Ten Years	Load Capacitance C <sub>1</sub> (pF)	Load Capacitance C <sub>2</sub> (pF)
DIP Type	SMD Type						
ZTB190-249E		±1KHz	≤20	±0.3%	±0.3%	330	470
ZTB250-374E		±1KHz	≤20	±0.3%	±0.3%	220	470
ZTB375-429E	ZTB375-429Y	±1KHz	≤20	±0.3%	±0.3%	120	470
ZTB430-509E	ZTB430-509Y	±2KHz	≤20	±0.3%	±0.3%	100	100
ZTB510-699E	ZTB510-699Y	±2KHz	≤20	±0.3%	±0.3%	100	100
ZTB700-1250E	ZTB700-1250Y	±0.5%	≤70	±0.3%	±0.3%	100	100



### Dimensions For SMD Type [mm]

